

Other Races Taking Back Seat Kealoha Leading Voters' Interest



BULK MAIL
U. S. Postage
PAID
Permit No. 708
Honolulu, Hawaii

10¢

Vol. I—No. 11

★ FILIPINO HERALD ★

OCTOBER 4, 1962

U.S. Congress Race Also Spirited

WHY I AM VOTING FOR:

Dan Inouye



Bicoy

Attorney Bernaldo Bicoy says:

"I am voting for Dan Inouye because he is closer to representing our hopes and aspirations for a better Hawaii in which to live." Moreover, he has demonstrated his ability to channel his efforts for the good of the people of this State without resorting to any sort of fanfare.

"His is one of proven ability on both the national and international scale. I am convinced that he will continue to serve our best interests in the U. S. Senate."

Frank Troy



Lydia McCarter

"In an era when high political offices are rapidly becoming the exclusive domain of either men of wealth or men who are backed by powerful 'machines' more than ever, we need the rugged individualism of men like Frank Troy."

These sentiments were expressed by Lydia McCarter, a sales representative, who also said she is supporting Frank Troy for U.S. Congress because she cannot "in conscience vote for either a rubber-stamp politician" or a "power-hungry materialist."

Dillingham



Mrs. Esther Camero

"Ben Dillingham should be our next United States Senator," says Mrs. Esther Camero of 2210 Harding Avenue. "During his ten years as a Supervisor and Territorial Senator, Ben proved that he had the courage and imagination needed in public office."

"Even those who opposed his views at that time commended him for fairness and integrity. This is the kind of representation we need in Washington. Hawaii is ready to show the rest of the nation she knows how to select her leaders."



Laureta

Having served three years as Congressman Dan Inouye's Administrative Assistant in Washington, I am more than ever convinced that Dan Inouye can and will be the best man to represent Hawaii in our United States Senate," declared Alfred Laureta, who arrived recently to campaign for Dan.

Continued Laureta: "Dan has been aggressive — yet diplomatic in his efforts to obtain from Congress and the Administration the many benefits which Hawaii has received during his tenure in the House of Representatives."

Laureta feels that Inouye has represented the best interests of all Hawaii and this

(Continued on Page 2)



Molina

"As a worker, his sound platform based on the needs of the people, reflects a conscientious regard for his fellow man."

"If we do not want government to fall into the hands of a chosen few — we must be willing to fight to keep it truly representative."

"The answer is to elect men who will dedicate themselves to working for all of us. That is why I am voting for Frank Troy," stated Miss McCarter.

"Most people are afraid to be different. But me, I admire a guy who is willing to stand up against great odds in order to fight for what he believes in."

(Continued on Page 2)



Valentin

Says Adelinio Valentin:

"I am supporting Ben Dillingham for the United States Senate. This is the man Hawaii needs to represent our interests in Washington. Ben has spent more than twenty years as a business man in our State and knows what is needed to create jobs, meet payrolls, educate our children and to buy homes."

practical experience as our Senator. We have seen that little can be accomplished for the good of Hawaii by a Representative who does not think independently but relies on the leadership of others. A vote for Ben is a vote for Hawaii."

See "Barrio Banter" for details, turn to Pg. 6



We wanted to make sure the front page would catch your eye — so we decided to run another photo of Marcia Hulaton Higa, our Cover Gal of several issues ago. Now, when you finish studying her—we hope you will just as carefully study the sample ballot below and abide by the rules.

REMEMBER: MARK ONE SIDE ONLY!

Either This Side . . . OR This Side

VOTE FOR CANDIDATES IN SAME COLUMN ONLY CONGRESSIONAL OFFICES

DEMOCRATIC

United States Senator

VOTE FOR NOT MORE THAN ONE (1)
KOHU AOLE A OI ARIU MAYO O HOOKAH (1)

INOUE, DAN E.

TROY, FRANK

Representative to Congress

VOTE FOR NOT MORE THAN TWO (2)
KOHU AOLE A OI ARIU MAYO O HOOKAH (2)

DELO, PHIL

FAIR, FRANK F.

GILL, THOMAS F. (TONG)

LAK, HERBERT E. H.

MATSONAGA, SPART M.

SILVERO, ROSE BROCKNER

(continued)

REPUBLICAN

United States Senator

VOTE FOR NOT MORE THAN ONE (1)
KOHU AOLE A OI ARIU MAYO O HOOKAH (1)

DILLINGHAM, BEN

Representative to Congress

VOTE FOR NOT MORE THAN TWO (2)
KOHU AOLE A OI ARIU MAYO O HOOKAH (2)

DELO, PHIL

FAIR, FRANK F.

GILL, THOMAS F. (TONG)

LAK, HERBERT E. H.

MATSONAGA, SPART M.

SILVERO, ROSE BROCKNER

(continued)

STATE OFFICES

Governor

VOTE FOR NOT MORE THAN ONE (1)
KOHU AOLE A OI ARIU MAYO O HOOKAH (1)

WILSON, JOHN A.

GUERRETT, RYTHAN M.

(No. 1)

(continued)

(continued)

(continued)

(continued)

(continued)

(continued)

(continued)

(continued)

(continued)

(continued)

(continued)

(continued)

(continued)

(continued)

(continued)

(continued)

(continued)

(continued)

(continued)

(continued)

(continued)

(continued)

(continued)

(continued)

(continued)

(continued)

(continued)

(continued)

Governor

VOTE FOR NOT MORE THAN ONE (1)
KOHU AOLE A OI ARIU MAYO O HOOKAH (1)

WILSON, JOHN A.

GUERRETT, RYTHAN M.

(No. 1)

(continued)

(continued)

(continued)

(continued)

(continued)

(continued)

(continued)

(continued)

(continued)

(continued)

(continued)

(continued)

(continued)

(continued)

(continued)

(continued)

(continued)

(continued)

(continued)

(continued)

(continued)

(continued)

(continued)

(continued)

(continued)

(continued)

(continued)

(continued)

The Office Of Governor

The most powerful authority in the State of Hawaii who exerts an influence on our daily lives and the welfare of our loved ones is the Governor of Hawaii. This is because the Governor is the supreme executive authority of the State.

Because of this, it is MOST IMPORTANT we select the right man as Governor. JIMMIE KEALOHA, honored public servant for twenty eight years, has TWICE the legislative and executive leadership of all other governor candidates combined.



Your vote for JIMMIE KEALOHA in Saturday's Primary will assure Hawaii's people of the same unselfish, dedicated and experienced public service that has been Jimmie's hallmark over the past twenty eight years.

**VOTE FOR
IMPROVEMENT IN GOVERNMENT
VOTE FOR
JIMMIE KEALOHA**

This ad sponsored by Friends of Kealoa

Remember to
VOTE
Saturday, Oct. 6

INOUE

(Continued from Page 1)

may be evidenced by the numerous public works projects he has been successful in obtaining for Hawaii; a Sugar Act which is highly favorable to our sugar industry, the inclusion of pineapples in the National School lunch program which thereby opens a new market for our pineapple industry, and many others.

TROY

(Continued from Page 4)

That is why I am going to vote for Frank Troy," stated Greg Molina, a well-known musician. "We need men who are not afraid to fight for what is right. So far, everything Frank Troy has stood for, I've agreed with. He is for the working man. He seems to understand their needs."

"This is not just an ordinary election. It is a contest between power politics, wealth and idealistic principles."

"It will be interesting to find out if we, as a people, are too late to save."

"There are no times in life when opportunity, the chance to be and do, gathers so richly about the soul as when it has to suffer. Then everything depends on whether the man turns to the lower or the higher helps. If he resorts to mere expedients and tricks, the opportunity is lost. He comes out no richer, nor greater; nay, he comes out harder, poorer, smaller for his pain. But, if he turns to God, the hour of suffering is the turning hour of his life." — Phillips Brooks.

DON'T FORGET TO VOTE
SATURDAY, OCT. 6th
EXERCISE YOUR RIGHTS AS
AMERICANS!

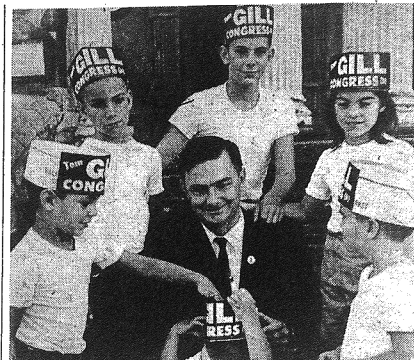
I'M
FOR **BEN**



Says Mrs. Rose T. Look,
Housewife,
1222-B 6th Ave., Honolulu

"I'm for Ben Dillingham for U. S. Senator. I want a successful man representing me in the Senate and Ben's been successful through plain hard work."

DILLINGHAM
for
U. S. SENATOR
COMMITTEE
P.O. BOX 975
HONOLULU & HAWAII



TOM GILL, Democratic Candidate to the U.S. House has SIX good reasons why he has been campaigning on a platform to reduce spiraling food costs in Hawaii. His youngsters, who all look like hearty eaters, have been helping Pop with his door-to-door campaigning.

HIGH PRICES FOOD FOR THOUGHT—GILL

"Housewife's for Gill Drive" operated on two Saturdays, Sept. 22 and 29th. Most major supermarkets on Oahu covered by ladies passing out attached flyer showing differences between average prices, Honolulu and mainland cities in June 1962 on certain common grocery items. Over 25,000 leaflets handed out.

The low price sale at All-Star Drive-In at 2334 South King, went on all day Sunday, Sept. 30 and featured the following items: 1 pound loaves of bread for 15c, 3 cartons of cola, 99c, 46 oz. cans of guava juice, four for \$1.00, ice cream, 4 quarts for \$1.10; Shoyu, 12 ounce bottle for 15c, and frankfurters for 40c a pound. According to August Yoo, project manager, over 1,000 people were served a 50c plate lunch with free soft drinks.

These activities, sponsored by the Housewives for Gill Committee, Mrs. Kenneth Kim,

Chairwoman, were aimed at the problem of high living costs in Hawaii, and what can be done about them: according to Tom Gill.

"Our prices on many common food items seem to be running from 20% to 40% over the mainland average. Our prices on housing insured by the FHA are over 50% higher than the mainland average. These costs are driving our young people from the state and stifling our economic growth. I am in favor of, and will work for, closer control of freight rates, vigorous use of the federal and state antitrust laws to prevent pricing monopolies, honest grading, labeling and packaging laws so that the housewife knows what she is buying, and development of the local diversified farming industry to give us better produce at lower prices."

ELECT DUKE KAWASAKI (D)

STATE SENATE
(5th District)



- * DYNAMIC POLITICAL LEADER
- * CHOSEN OUTSTANDING YOUNG DEMOCRAT OF HAWAII
- * ADVOCATE OF SMALL BUSINESS
- * DEDICATED COMMUNITY LEADER
- * PLEDGED TO IMPROVE EDUCATIONAL FACILITIES

Classified Section

Real Estate
Wilbert Yagi
Real Estate Sales & Investments
Phone 540-290

"Bert" Villanueva—Realtor
COMPLETE
REAL ESTATE SERVICE
Phone 558-30

FRED C. BLANCO, Realtor
Fine Homes & Income Properties
Ph: Res-978-13 ofc: 571-329—555-84

For FAST, efficient pick-up and delivery of small items, call 590-272.

Personals
LOCAL LAND AND TAX PROBLEMS solved from the bottom up! JOHN J. HULTEN for State Senate (5th District).

ATTENTION:

E-W Center Students!
Filipino student wanted to baby-sit, do light house-work, in return for room and board. Ph.: 743-571 (Filipino family)

WORRIED OVER YOUR CHILDREN'S EDUCATION ?

... here's one election that should concern you

Does the name Moses Clavaria mean anything to you?

Do you know who Mary Moe, J. Ralph Brown, or Lloyd C. Kaapana are? What about Juanita Kenda or Alexander Y. H. Kim?

If you don't know who these people are, you may be throwing away some of your most valuable votes in the forth-coming elections.

These five are a few of the candidates who are seeking positions on the non-political School Advisory Council.

While the positions seem trifling as defined by law, they potentially control the future education of your children.

With little interest and less understanding, the public has generally ignored the whole School Advisory Council matter.

Recently, when PTA's and other interested groups held meetings to discuss the idea, few people bothered to attend.

Informational material was also generally ignored and when filing time for the recently created posts drew near, there were not even enough candidates to fill the 31 required openings on the council.

Some last-minute pleas of concerned citizens brought a land rush total of 116 candidates. Many who responded are highly qualified while a number are obviously out for a little easy prestige.

If interest in the Council and what it is was low, the interest in the candidates is even lower.

Many of the more serious seeking the positions have gone to great trouble and personal expense scheduling meetings, arranging programs and obtaining educational material, only to find they are fortunate to have 20 or more people attend. Some of the meetings had to be adjourned when no one appeared.

From the number of complaints made every year about the quality and prices of school lunches, the excess or lack of home work, the number of hours spent doing kitchen and janitorial chores and the caliber of teachers—it might have been assumed there were a few people interested in having some say about the schools.

The shallow legal definition of the Council's duties and lack of political and personal contest have doubtlessly left the public indifferent.

While the nature of the advisory duties of the Council are obscure, the importance of its membership becomes apparent when it is known that either they or persons chosen by them will make up the powerful State Board of Education.

The Board of Education in turn, operates all the public schools in the State, controlling teachers, curriculum and supplies.

Each country will have a School Advisory Council. Kau-

ai's Council will have four members elected at large. Maui will have six members, one from the Molokai-Lanai District, the other five from Maui Island.

Hawaii Island will have seven members on their council. One each from the 1st, 3rd, 4th and 5th Representative Districts and three from the 2nd District.

Oahu will have a 14-member Council; seven members from the 4th Senatorial Districts and seven from the 5th Senatorial District.

Since this is the first year

of elections, terms will be on a two and four-year basis.

The candidates with the highest vote will get the longer terms. In future elections all terms will be for the full term, four years.

Some time following elections the various Councils will meet to prepare a panel of names to submit to the governor from which he will choose the State Board of Education.

Each County list will include all the names of the advisory board and the additional names chosen by the Council.

Kauai and Maui will submit one name each besides their Council members. Hawaii will submit two and Oahu, six.

From these names, the entire membership of the Council and their suggested names, the Governor makes his choice.

If members of the Council are appointed to the Board, their places on the Council are filled by the candidates from the county receiving the next highest votes.

If all this still sounds a bit confusing, remember that EVERY candidate for the

School Advisory Council is a POTENTIAL member of the State Board of Education.

As such he can affect the kind of education your child will receive, his preparedness for future earnings and many of his civic ideals.

It is not too late to check into the qualifications of the people in your district.

The PTA offices at 1229 Pensacola (phone: 502-595) or the League of Women Voters will be glad to help you with information on candidates from your district.

YOUR JOB

is your greatest asset because it allows you to exist and provide yourself and your family with the essentials of life.

A BETTER JOB

is the means of providing yourself and your family with the better things of life.

LOSS OF YOUR JOB

is the fear that brings the greatest feeling of insecurity.

FULL EMPLOYMENT

for all of us is a dynamic force that keeps our economy healthy.

All candidates for public office agree with the above statements. Most candidates are "going to do something about it." "FIGHTING FRANK TROY," Candidate for United States Senator, has a practical solution.

WHO WILL BENEFIT FROM FRANK TROY'S PLAN?

WORKERS: who are at present employed—the unemployed—those seeking their first job—those needing additional training to improve their positions.

EMPLOYERS: those seeking workers to perform a specific job—those who are concerned about the high cost of Unemployment benefits—those looking for a community in which to start a new business.

TAXPAYERS: who are concerned about the high cost and inefficiency of existing government employment agencies.

ALL PERSONS: who would like to see our economy expand—who are troubled about the jobless—who are concerned about Russia outstripping the U.S. in production and scientific achievement.

FRANK TROY SAYS:

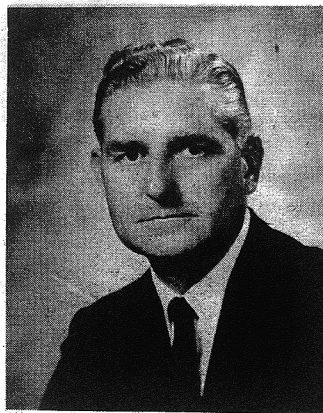
We should help our unemployed by actively working to match their abilities to existing jobs, instead of paying them for not working.

We should be able to present to employers a list of every available, qualified worker to fill available jobs.

We should be able to give potential new industries a complete picture of the labor force available.

This information should be made available to a system of offices throughout the country to allow speedy mobilization of our labor force in times of emergency.

All of this can be done through the employment of electronic equipment now available and used with great success by private industry.



FOR UNITED STATES SENATOR

FRANK TROY D



This ad was paid for by contributions to Friends of Frank Troy.
Contributions may be sent to Friends of Frank Troy, 5944 Kalamiaale Hwy., Honolulu 16.



Ed. Note: Attention ladies! Is there some pet peeve with regard to your husband (or just men in general) that you would like to have Countess Marcia comment on? Drop us a line or two and we will be very happy to pass it along to the Countess.

Had we ourselves no faults we should find less pleasure discovering them in others.
—François de la Rochefoucauld

"Unless you're prepared to DO SOMETHING about the 'terrible state of world affairs' — you had better be prepared to put up, or shut up."

Stop taking out your dissatisfaction with conditions in general on your poor, suffering wife.

It's that time of year again—so the matter lies squarely in your dear, grubby paws.

PACARRO'S CHANCES RATED GOOD IN FIRST BID FOR STATE HOUSE

Rudolph (Rudy) Pacarro, who was born in Ewa and grew up in the Liliha-Puuuui district is making a first-time bid for election to the State House of Representatives.

The 34-year-old Democrat, a member of the Honolulu Realty Board, the Filipino Chamber of Commerce and the Police Activities League is associated with Manoa Realty Company. He is also a director of Hawaiian Drydocks, Ltd.

Pacarro attended St. Louis College and Colorado State College of Education. He graduated in 1953 from the University of Hawaii and holds a bachelor's degree in personnel and industrial relations.

Political pollsters rate him as having a "good" chance of gaining nomination.

He is married to the former Mabel Jean Cortezan of Koloa, Kauai. They are the parents of four boys.

Remember the last election when you put your "X" next to a guy's name purely because you wanted to DEFEAT someone else?

In case you have forgotten—the guy who is now making you moan loudest these days, is the very same individual you helped to elect. And all because you figured HE was the lesser of the two evils.

That's what you get for voting negatively. Maybe this time you will make your vote count.

Maybe this time, you will vote for THE RIGHT GUY. The Guy who will truly represent you.

Then, maybe you will stop grumbling at your wife. It's not really HER fault, you know.



Pacarro

BURNS IS BEST FOR ALL HAWAII



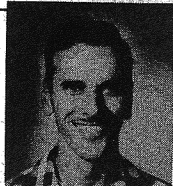
Elect JACK BURNS
(D)
GOVERNOR

The Democrats gave recognition to the Filipinos when Jack Burns was chairman of the party. The present administration has ignored the Filipino community. Vote for Jack Burns — a Governor for ALL the people, not for a favored few.

A Business Man for a Business Job

Filed for by Governor, 2 Merchant St.

I'M FOR BEN



Says George L. Santos, Sr. purchasing agent, 1221 Mowal Street, Kailua

"I'm for Ben Dillingham for U.S. Senator. This man has common sense and when we send him to Washington, we'll send a practical man who'll talk out against wild spending."

DILLINGHAM
for
U. S. SENATOR
COMMITTEE
P.O. BOX 375
HONOLULU 5, HAWAII

Herald-Japan Airlines Plan Exciting P.I. Tour

Full details of an exciting tour to be sponsored by The Filipino Herald in cooperation with Philippine Airlines and Japan Air Lines will soon be unveiled.

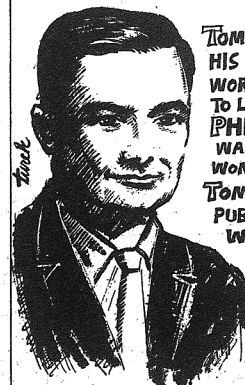
The 20-day tour of the Orient will include the Philippines, Hong Kong and Japan. It is slated to leave Honolulu sometime in May.

Total price for the tour (to be disclosed later) includes transportation by jets, First Class hotel accommodations, special parties and many other exciting features such as full V.I.P. treatment all along the way.

Final arrangements are now being completed and readers of The Filipino Herald can expect to look forward to complete details of this fun-filled and fascinating Philippines Tour in future editions of this paper.

Be sure to watch The Filipino Herald for more information concerning one of the most thrilling travel treats of all times!

Help send
TOM GILL
to CONGRESS...
...AN HONEST MAN
WITH GUTS AND BRAINS



TOM GILL PROVED HIS BRAVERY IN WORLD WAR II BATTLES TO LIBERATE THE PHILIPPINES (HE WAS WOUNDED AND WON THE BRONZE STAR)
TOM GILL IS ONE PUBLIC SERVANT WHO IS NEVER AFRAID TO FIGHT FOR THE LITTLE PERSON!

LET TOM GILL FIGHT FOR YOU IN WASHINGTON!

GILL THOMAS P. (TOM)



PAID BY THE MANY FRIENDS OF TOM GILL

BARRIO FIESTA

Rumelia Duque Flores



"News From The Neighbor Islands"

KAUMAKANI, KAUAI

The Filipino Youth Club was organized under the auspices of the Olokele Filipino Association, for the promotion of youth participation in civic activities and for learning the functions of club activities. At present it has 21 members composed of children from grade 7 to 12 regardless of age and religion. It is headed by Mr. Basilio Fuertes, Sr. and Mr. Victor Ballesteros of Hanapepe. One of the recent activities of the club has been the planting of coconut trees and various species of crotons around the new pavilion in connection with the beautification of the Waimea River Park. The club meets on the second Saturday of each month at the New Village Community Hall at 2:00 p.m.

The officers of the club:
Alberta Baxa — Acting Chairman.

Melinda Biola — Vice President & Membership.

Carmen Mae Fuertes — Secretary.

Gloria Baxa — Treasurer & Finances.

Domingo Lutao Jr.—Sgt. At Arms.

Patrick Baniaga — Sgt. At Arms.

Patricia Valenciano — Program.

LIHUE, KAUAI

Rev. Father Alfred Vann celebrated the nuptial mass at 10:30 a.m. for the marriage of Miss Margarita Soriano and William Robert Tam. The altar of the Church of the Immaculate Conception at Kapaia was adorned with calla lilies and candles. The bride was escorted by her father. She is the daughter of Mr. and Mrs. Sixto Soriano. The bridegroom is the son of Mr. and Mrs. Robert B. Tam of Honolulu. The couple will make their home in Lihue where the bridegroom is employed by the Hawaii State Employment Service. He is a graduate of the University of Hawaii. The bride, a Waimea High School graduate, attended Montana State University.

MAUI SOCIALS

Wedding vows were exchanged by Miss Cecilia Robia and John Soliven both of Paia, Maui at the Paia Holy Rosary Church last week. A reception was held at the Paia Filipino Community Club House. Par-

ents of the newlyweds are Mr. and Mrs. Sebastian Robia and Mr. and Mrs. Leoncio Soliven. We wish the couple good luck and a happy wedded life.

OLD-TIMERS OF HC & S
HC & S Retirees made their last bows to their fellow workers. Vicente Tarnay of the Irrigation Section who had 31 years of service with the company and Alberto Ducusta of the Harvesting Section who has had 26 years of service with the company. They plan to visit their beloved homeland, the Philippines, in the near future.

OAHU NEWSSETTES

WAIALUA, OAHU

Two families were reunited recently. Alfredo Agsaldia was reunited with his family recently when his wife, Fausta and three children Robert (17), Margarita (10) and Alfredo, Jr. (4) arrived from the Philippines. They are now residing at 67-342 Kukea Circle.

Also Rogello Barayuga and family finally reunited. Last Sept. 14 his wife, Florentina and daughter, Ester arrived from the Philippines. They are now residing at Mill Camp 8, House 18.

WAIPAHU, OAHU

Miss Aurora Ildefonso and Mr. Ciriaeo Camarillo exchanged vows last Saturday at the St. Joseph Catholic Church at three o'clock in the afternoon. Reception was held at the Willy's Restaurant from 4:00 to 9:00 in the evening. Wedding sponsors were Mr. and Mrs. Salvador Ventura of Honolulu and Mr. and Mrs. Arturo Barba of Honolulu. The bride is a sister of Mr. Rafael Ildefonso of Waipahu and the groom is the brother of Mr. Enrique Camarillo of Waipahu also. Mrs. Camarillo is from Piddig, Ilocos Norte and Mr. Camarillo is from San Fernando, La Union.

HONOLULU, OAHU

CONGRATULATIONS! to the Salves (Mr. and Mrs. Modesto Salve) who are having the grand opening of their new business location.

Here is a big welcome to the Ramelb heir. Atty. and Mrs. Carlos Ramelb (nee Teresita Hilario) are proud parents of a bouncing baby boy born last Labor Day, September 3rd. He is named after his daddy — Ruben Carlos. MABUHAY to the Ramelbs.

—BEN— DILLINGHAM

A voice for all Hawaii!



You can be proud of Ben Dillingham as your United States Senator.

You can be proud of

- his background as a third generation builder of Hawaii...
- his outstanding, independent *service* in the territorial Legislature...
- his military record, his business *experience*, his active *participation* in the civic and community affairs of Hawaii...

You can be sure of his determination to *fight* for Hawaii.

You can be sure of his mature *devotion* to our country's best interests through encouragement of private initiative and enterprise.

You can be sure of
BEN DILLINGHAM
as your
UNITED STATES SENATOR

DILLINGHAM FOR U. S. SENATOR COMMITTEE

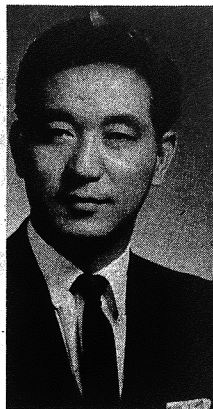
P. O. Box 3752, Honolulu 6, Hawaii
Robert H. Rath, Chairman

MEN WHO GET AHEAD
have well-groomed hair from dawn to dusk

THE SECRET'S Cabellina

TRY IT TODAY
...YOU'LL NOTICE THE DIFFERENCE!

50¢ plus tax at all drug counters



RE-ELECT

★ PETER S.

IHA

YOUR REPRESENTATIVE

12TH DISTRICT ★ ★ ★ DEMOCRAT
I solicit your vote on the basis of my past legislative record and my renewed promise to continue to represent your interest.

Barrio Banter

By JUAN PAKUAN

"My name is so-and-so. Will you give me one of your votes in the coming election?"

The pitch is a standard one. It has become so familiar, voters have come to expect it each election year.

This year, a variation on that theme has been added. It is one with such bizarre implications—it is giving grey hairs and insomnia to a great many people, mostly politicians.

The burning question on everyone's lips these days is: How many voters will abandon all other races to help Jimmy Kealoha win the governorship nomination?

The possibility that thousands and thousands of voters are preparing to cross over the line to give "one vote" to Kealoha is of such major concern, numerous scare editor-

ials are being written. Voters are being warned of the dire consequences of following such a course.

They are being warned of the danger of possibly throwing away their entire ballot if they persist in crossing the line.

The gist of these warnings is based on the premise that voters crossing the line to "help Jimmy" will not be able to resist the temptation of marking an "X" on the other side to help other friends in other races.

What no one seems to have considered is the possibility that a great many voters are going to turn out in the primaries to vote in JUST ONE CONTEST: the governorship race.

There is a growing lack of concern among voters over the fact that casting one vote for Kealoha may deprive them of the privilege of voting for anyone else in the primaries.

One Democrat whose sole concern in the primaries is the governorship race was asked if he was aware that casting that one vote for Jimmy would (unless he is backing other Republicans) be the ONLY vote he would be able to cast.

"If all I'm gonna have is one vote—then I am gonna give it to Jimmy Kealoha," was his firm reply.

This sentiment is fast becoming the battle cry of a growing number of independent voters and dissatisfied Democrats.

Veteran politicians and political forecasters who had written Jimmy off a few months ago are now taking new note of the hard-campaigning local boy.

Taking their last-minute campaigning and polling to the grass roots of the State, they are finding Jimmy has already been there, leaving a trail of solid votes pledged.

At the University where politics have been traditionally, strongly Democratic, a growing group of students are talking Pro-Kealoha.

That the "handwriting on the wall" is becoming clearer is manifested in the intensified door-to-door campaigning by Quinn and his supporters.

Another sign that Quinn's backers are finally confronting the fact that Kealoha is giving serious competition to their boy is the recent article by A. A. Smyser in the Honolulu Bulletin-Advertiser.

In his article, Smyser builds a strong case to support his belief that "the password to victory in elections is incumbency."

He goes a little further and predicts (based, he says, on his study of past elections) that present elected officials will probably retain their offices. "My feeling is that there is no great demand for change in the air," wrote Smyser.

While this may be true of other races—it is definitely not true of the governorship race. In the same issue in which

Smyser's prediction ran, was another, equally interesting article.

Writing for the New York Times in a cleverly worded letter entitled: "How The Analysts Analyze Elections," Russell Baker points out how difficult it is not downright impossible it is for political analysts to predict even the day before election day just WHO will win.

As for the incumbent having the edge on other candidates—even Smyser's article had to concede some instances when incumbency was not enough for at least two candidates: the late Mayor Wilson and Anthony Baptiste.

A more recent, notable example: Teddy Kennedy's smashing victory over Edward McCormack in Massachusetts.

If the incumbent's position is as solid as Smyser's article would have readers believe, why are Quinn's supporters now privately so worried?

As one not-so-happy politician pointed out: "The kind of loyalty Kealoha is building up can affect almost every office on the ballot."

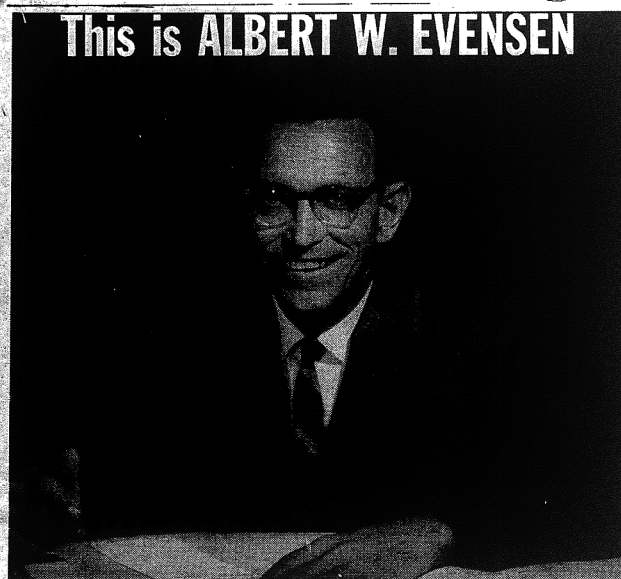
Some feel that the big ammunition usually reserved for the general election may have to be thrown at him now.

The man most concerned about Kealoha is his fellow Republican opponent, Bill Quinn. Although affecting a public appearance of indifference, even scorn, his radio, TV and newspaper advertising has markedly increased.

His hand-shaking tours are more frequent and he and Nancy have been doing a remarkable amount of "shopping" in supermarkets.

There is another aspect of the Kealoha campaign beginning to worry other Republicans.

Kealoha's increasing voter (Continued on Page 7)



This is ALBERT W. EVENSEN

- EVENSEN is island born He was born in Honolulu, is a graduate of Roosevelt High School, the University of Hawaii and the University of Virginia Law School.
- EVENSEN is a qualified legislator He served two terms in the local legislature. He has been a member of the State House Lands Committee, Committee on Higher Education, Agriculture Committee, Public Employment Committee.
- EVENSEN is an experienced attorney He served as Deputy City Attorney for four years with City and County of Honolulu. He is now in private practice with law associates, Walter Chuck, Wallace Fujiyama and Henry Shigekane.
- EVENSEN understands the problems of the farmer He and his wife, the former Betty Bowers raise poultry at their Kaneohe, Oahu home. He learned much about farming from his father-in-law, agronomist Francis Bowers.
- EVENSEN knows the problems of local businessmen He is Board Chairman of Hawaiian Juice Industries.
- EVENSEN is a community servant He is past member of the Lions Club, Central Union Church, YMCA, Boy Scouts of America, Hawaiian Civic Club, Bar Association.

This ad sponsored by EVENSEN FOR CONGRESS COMMITTEE
Evensen Headquarters: 1447 Kapiolani Blvd. / Honolulu, Hawaii / Telephone: 995-184, 995-610

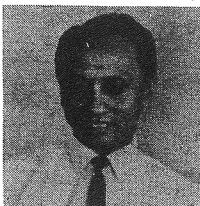
I'M FOR BEN



Says Frank Rice, Insurance Investigator,
1078-C Kinau St., Honolulu
"I'm for Ben Dillingham for U. S. Senator. Now that Hawaii is a state, we've got to show we can send strong leaders to Washington. Ben is a strong leader."

DILLINGHAM
for
U. S. SENATOR
COMMITTEE
P.O. BOX 200
HONOLULU 5, HAWAII

APL OFFERING HOLIDAY CRUISES



Martinez

Barrio Banter

(Continued from Page 6)

impact stems from the solid wall of support he has been garnering from many unexpected sources. Day-by-day he is developing a "machine" that is beginning to worry some of the old guard because it is one they might not be able to later control.

★ ★ ★

Jack Burns, whose two years of relative political quiet has annoyed and disappointed many fellow party members, continues to officially ignore Jimmy. But his backers, like most Democrats, are busy wooing the increasing numbers of their party members and independents who are willing to sacrifice their right to vote in other races to give an all-important vote to Kealoaha.

But if Democrats are worried about the effect this cross-over will have on other races—their REAL concern is the possibility that once they cross over, many voters will remain on the other side.

This campaign that is making so many politicians so uncomfortable is an amazingly money-short one. Without benefit of slick high-priced newspaper and t.v. advertising, or endless radio spots that give out infantile jingles, the chatter of scatter-brained housewives or parrots saying: "I'm for..." —Kealoaha is effectively spreading his message. "No ple-in-the-sky," promises — just "good management of State Government."

★ ★ ★

Once they have announced, most candidates would disappear from the public mind were it not for advertising.

Not so Jimmy Kealoaha. For 28 years, with only one defeat, he has successfully used the no money, person-to-person approach to campaigning.

He has been campaigning on the belief that people are no longer fooled by big, vague, general promises. He feels the door-to-door visits give him a chance to answer more individual questions, as well as a chance to find out what people are really feeling.

If the kind of reception he has been getting is any trend — Jimmy Kealoaha may well turn out to be the political surprise of the year.

American President Lines for the eighth consecutive year is making it possible for hundred of Filipinos living on the mainland and in Hawaii, to enjoy a two-week's vacation at sea at economy rates.

The Cruise is designed to help Filipinos spend the holiday season with their friends and family in the Philippines at reasonable prices.

APL's Fil-American Holiday Cruise ship this year is the SS PRESIDENT WILSON. It sails from San Francisco on November 25th. Residents of Hawaii may board on November 30th, after the mainlanders have enjoyed a day's visit in Honolulu.

On the itinerary is a one-day visit to Yokohama and nearby Tokyo, then a full-day's visit to Hong Kong where they can do their Christmas shopping. The ship is scheduled to arrive in Manila December 15th and a special welcoming committee will be on hand to greet them on arrival.

APL's popular Tony Martinez in Honolulu and his brother Jose, will be cruise hosts. Jose Martinez is District Filipino Passenger Traffic Manager for APL in San Francisco. The Martinez brothers will assist everyone with the various customs and immigration formalities.

Round-trip fares from Honolulu in Economy Class range from \$495 and up. First Class fares start at \$916 and up.

APL rates make it possible to take the whole family without breaking the budget.

For example, one child under one year may travel for

only 10% of the adult fare while additional children under one year and others up to three, will be charged only one-quarter of the adult fare. Those three to twelve in age pay only half-fare.

Other benefits include free baggage allowance up to 350 pounds.

Meals are slanted toward the Filipino palate with menus featuring many native dishes.

Among the new features this year are an extended sundeck, new veranda lounge and bar, a spacious, comfortable, main lounge, enlarged glass-enclosed and open-air promenade decks, a children's playroom with trained supervisors on hand, library and hi-fi and stereo phonic music.



Says Ben Miguel, carpenter,

1809 Eluwene St., Honolulu
"I'm for Ben Dillingham for U. S. Senator. He and his family have proved they have the best interests of Hawaii at heart. He knows how to build jobs and payrolls for Hawaii."

DILLINGHAM
for
U. S. SENATOR
COMMITTEE
P.O. BOX 3752
HONOLULU 5, HAWAII

Brak & Co., (Hawaii) Inc.

FOREIGN EXCHANGE

TRADE FINANCING

102 NORTH KING STREET, HONOLULU 17, HAWAII

TELEPHONE 54-9228

Fast and Reliable Remittance Service WITH MONEY BACK GUARANTEE

Payments with Peso drafts in Manila; with Peso Postal Money Orders to all Provinces, without deductions for the beneficiary.

We buy and sell Cash Pesos and all other foreign currencies at current rates.

GOLD COINS AND TRAVELERS' CHEQUES

Personal and Industrial Loans

WE SELL CORPORATE NOTES EARNING 6 1/2% INTEREST PER ANNUM.

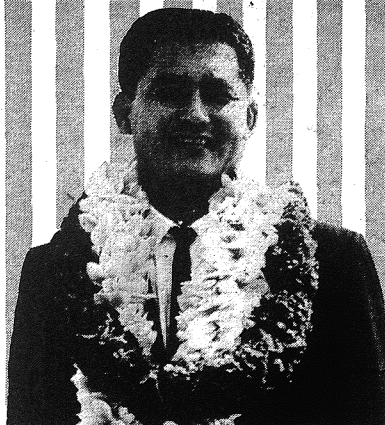
Brak & Co., (Hawaii) Inc.

FOREIGN EXCHANGE

TRADE FINANCING

102 NORTH KING STREET, HONOLULU 17, HAWAII

Elect ROBERT Y.



KIMURA

STATE SENATOR

FIFTH DISTRICT

Democrat

BACKGROUND & QUALIFICATIONS:

Born and educated in Kalih
Northwestern University Law School—Juris Doctor Degree
Instructor in Business Law—University of Hawaii
Veteran—World War II, Korean Conflict, Active Reserve
Office
Senate Democratic Attorney—First State Legislature
Vice Chairman, Advisory Committee to Director of Labor & Industrial Relations
Legal Counsel for Rural Oahu Interscholastic Association

PLATFORM:

Betterment of our Public Education System
Increase job opportunities by economic development
Concerted effort to curb juvenile delinquency
Better planning & immediate attention to highway & traffic problems
More fire & police protection in rural areas

A CHANGE FOR THE BEST

Note ROBERT Y. KIMURA

I WOULD LIKE TO SUBSCRIBE TO THE FILIPINO HERALD

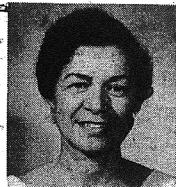
36 issues for \$3.50—Oahu
36 issues for \$4.50—Outer Islands

Name

Address

A KEY TO SUCCESS
Seek comrades among the industrious, for those who are idle will sap your energies from you. — Frederic Van Rensselaer Dey

**I'M
FOR BEN**



Says Mrs. Ellen W. Kalahelo, housewife,

2877 Pali Highway, Honolulu
 "I'm for Ben Dillingham for U. S. Senator. There are too many people making decisions for our country today who are fuzzy minded. We need a sound thinker like Ben for Senator."

DILLINGHAM
 for
U. S. SENATOR
 COMMITTEE
 P.O. BOX 3752
 HONOLULU 5, HAWAII

EDITORIAL

MAKE YOUR VOTE COUNT!!

Would you deliberately crumple your ballot and throw it away in the waste basket?

Of course not!

Yet, that is precisely where many votes will wind up — unless you take the trouble to vote thoughtfully and with great care on Saturday.

Make no mistake about it — YOUR vote is going to play an important part in your future and the future of your children.

The privilege of voting is too important to throw away. **MAKE YOUR VOTE COUNT!**

Voting for many people, is a highly emotional act. And in some quarters this has been a highly emotional campaign. When you enter that booth — vote coolly, carefully and thoughtfully. Remember — once you leave it — it will be too late for any last-minute regrets.

Whether you vote on the Republican side or the Democratic side — take extra pains to make sure that you **MARK ONLY ONE SIDE OF THE BALLOT.**

Otherwise — you might as well crumple up your ballot and throw it away in the waste basket.

THE FILIPINO HERALD

Office: 1739 Iwi Way, Honolulu, Hawaii Ph. 776-466

TEDDI MEDINA Editor
 RUMELIA FLORES Contributing Editor
 JUNE GUTMANIS Staff Writer
 ADELINO VALENTIN Staff Writer

The Filipino Herald is published weekly with a printing of 10,000 and an approximate readership of 50,000, and is owned and published by The Filipino Herald, Incorporated.

ITS OFFICERS ARE:
 PRESIDENT Dr. Stanley Standal
 VICE PRESIDENT & DIRECTOR Teddi Medina
 SECRETARY & TREASURER Mrs. D. A. Meredith

OUR READERS WRITE . . .

ROCKEFELLER AND THE SECOND MAHELE

Some friends gave us a recent copy of your paper last week. We enjoyed it very much and are sending our subscription with this letter.

The story about Governor Quinn's record sure made us laugh. Now he's saying that the Big Development down here by Rockefeller is the "Great Mahele."

Now, how does he get that way?

The land Rockefeller is using is Parker Ranch land and anyway wasn't the Mahele supposed to be for us? We just want enough for a home and maybe a little to farm.

Keep up the good work.

NAME WITHHELD ON REQUEST

SAYS JUAN PAKUAN HITS TARGET

We just returned from our vacation and have been busy catching up on the mail, magazines and newspapers.

Read with special interest the Sept. 6th "Barrio Banter" re: "Look At Record" Says Quinn".

As you know when I read the one on "Jack Burns Pays Tiding Politics"—I wondered if someone had got to you. All your talk on independence started to sound hollow.

My apologies, you are calling it as you see it on both sides.

I'd certainly like to know who Juan Pakuan is. Whoever he is—his sources seem to be very good. All of his stuff has scored a bull's eye so far.

He must get around because his writing seems to come "straight from the horse's mouth!"

I hope you keep him on because more and more people are turning to your paper to find out things that we can't get in either one of the dailies.

Consuelo Asuncion

Ed. Note: Reader Asuncion is correct. Juan Pakuan DOES get around—specially in high government circles, which is why he will have to remain anonymous.

**FAST
SERVICE**

**LOW
BANK
RATES**

FOR
AUTOMOBILES
HOME
IMPROVEMENTS
APPLIANCES
PERSONAL
NEEDS

FIRSTPLAN

LOANS

**FIRST
NATIONAL
BANK**
OF HAWAII

Member Federal Deposit Insurance Corporation.

In Hawaii... Think **FIRST**



Dear Friends:

I believe I have served you well in the past as a Legislator and Administrator in Government.

This State has grown and prospered on the reputation of generosity of all its people, regardless of race, creed or color.

I now speak from my heart as I ask the opportunity to serve all the people of Hawaii Nei in the office of Lt. Governor.

Sincerely,

Percy K. Quinn

PERCY K.
 Lt. Governor
 Republican